

HOW TO USE THIS MANUAL

Wiring Diagrams and connectors.

All the wiring diagrams show a separate system and are arranged in alphabetical order for easy reference.

Wiring between connectors and components shown in the diagrams represents the actual wiring as it exists on the vehicle. Charts are provided in the first part of the manual, giving colour codes for the wiring colour identification.

Power Distribution

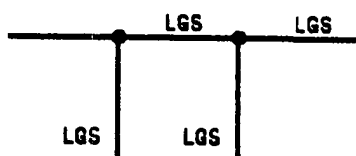
The Power Distribution diagram shows the connections from the battery to the engine and passenger compartment fuseboxes. It also shows the internal circuitry of both the passenger and engine compartment fuseboxes.

Earth Distribution

The earth distribution diagram shows the individual earth points and all the circuits affected by them.

SYMBOLS USED IN THE CIRCUIT DIAGRAMS

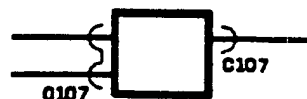
Wire colour



86M 1810

Wire insulation is either all one colour, or is one predominant colour with a stripe in a second colour. Wire colours are identified by a letter code, the main colour is identified first. LG/S = Light green / Slate stripe.

Connectors



86M 1811

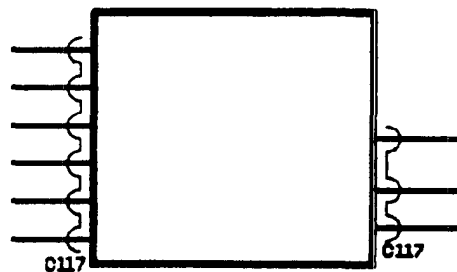
The reference number shown by the connector should be used in conjunction with the connector wiring section and harness layout drawings.

Line types



86M 1812

This means the wire connects to another circuit or component.

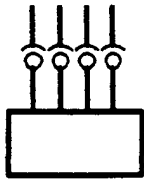


86M 1813

This means that these wires are in connector C117 see **Connector Wiring**



A



B



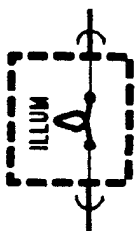
86M 1814

Connector - Direction of the 'symbol' indicates male and female halves of connector.

A. Plug on lead (Flylead) wired directly to the component.

B. Connector plugs directly into component.

Components

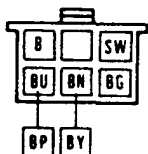


209

86M 1815


Name or description - appears next to the component.

Connector options

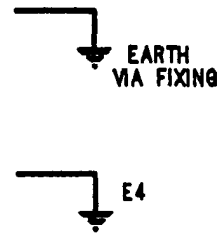


C133-6 PIN

86M 1817

In the connector wiring section, connectors with the  label may have one of the different wire colours shown depending on the vehicle specification.

Earth points



86M 1818

An earth symbol indicates the earth terminal. Each earth wire is numbered. For position see **Earth Distribution**.

An earth symbol adjacent to the component - indicates electrical earth is direct through the component mounting.



86M 1819

Identifies Radio Frequency Interference (R.F.I.) shielded wire. The shielding is always connected to earth.

Electrical - Info

WIRE COLOUR CODES

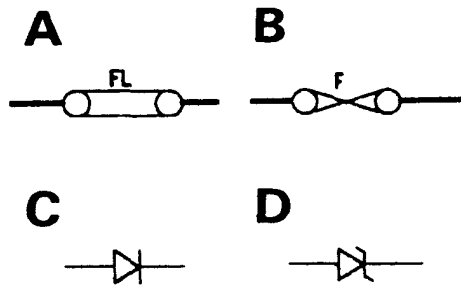
The following list contains the wire colour codes used on the vehicle harness and is intended to give an indication of the function a

particular colour wire is usually used for. These guidelines do not always apply to the wiring between components and the main harness.

Code	Colour	Function
B	Black	Earth wire from a component to an Earth tag. Black with a tracer is also usually an earth wire but the earth is switched by a control unit.
G	Green	Ignition fused supply from Passenger compartment fusebox i.e. Clock, instrument, indicators, electric mirrors
K	Pink	Fused supply i.e. Central door locking
LG	Light Green	Ignition auxiliary fused supply from passenger compartment fusebox i.e. Reverse lamps, brake lamps
N	Brown	Battery supply. To ignition switch from fusible link 3 and 5.
O	Orange	Fused supply i.e. Central locking
P	Purple	Fused permanent supply. To interior lamps, radio cassette, clock, anti-theft alarm, electric aerial
R	Red	Fused supply i.e. Sidelamps
S	Slate (grey)	Fused supply i.e. Electric windows
U	Blue	Fused supply i.e. Headlamps, Cooling fans
W	White	Ignition switched supply to passenger compartment fusebox.
Y	Yellow	Ignition switched supply to passenger compartment fusebox.



Fuses and Diodes



86M 1820

Fusible links (a) and current rated fuses (b) are drawn as shown.

Diode (c) current flow is shown by the direction of the arrow.

Zener type diode (d) - prevents voltage passing until a precise value is reached.